

PANEL LED RECTANGULAIRE

LS-S048C



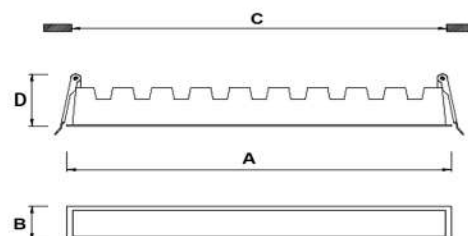
Applications:




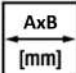
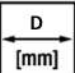
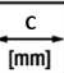
Avantages:

- Ce panel LED rectangulaire vous permet d'obtenir un éclairage pratique et discret.
- Corps en aluminium.
- Diffuseur en polycarbonate.
- Un boîtier résistant.
- Intensité lumineuse élevée.
- Un design épuré et élégant.
- Faible consommation électrique.

Dimensions:



Caractéristiques techniques:

REFERENCE LAMPE		W	K	lm	IP	IRC	 [mm]	 [mm]	 [mm]
LS-S048C-10W	220V	10W	4000°K	800lm	IP20	>80	147x45	60	138x35
LS-S048C-20W	220V	20W	4000°K	1600lm	IP20	>80	280x45	60	270x35
LS-S048C-30W	220V	30W	4000°K	2400lm	IP20	>80	414x45	60	405x35